

Comparing, Radical Equality and Global Feminist Filmmaking Practice

TALK & ROUNDTABLE
DISCUSSION

December 16 2020

4 - 6 PM CET

via Zoom:

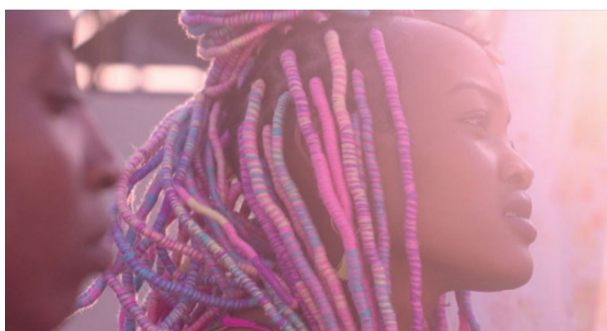
[https://cutt.ly/
WhcFytp](https://cutt.ly/WhcFytp)

BERNADETTE WEGENSTEIN

JOHNS HOPKINS UNIVERSITY

Prof. Dr. Bernadette Wegenstein is a film and media scholar, Director of the Center for Advanced Media Studies at Johns Hopkins University, and filmmaker. During her career, Professor Wegenstein collaborated amongst others with Elizabeth Karr (known for her work on *Blade Runner*, *Minority Report*) and Jeff Beal (known for his *House of Cards* score).

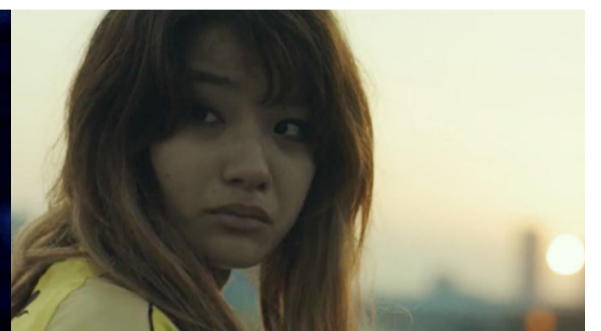
In her talk on “Radical Equality and Global Feminist Filmmaking Practice”, Professor Wegenstein will engage with contemporary global feminist cinema practice to ask several questions: “What is a feminist film-practice?”, “How is it expressed differently in a global context?” and “How can a feminist film practice generally contribute to ideas of radical equality?” The exemplary film scenes Professor Wegenstein presents tell about a female experience either expressively countering male domination in the story-lines and visual strategies such as the Chilean film *Princesita* (2017) by Marialy Rivas, which is about a dangerous religious cult, or they overtly problematize the struggle with race and its intersections with female sexuality as addressed by Wanuri Kahiu in Kenya with her film *Rafiki* (2018), that tells the story of a lesbian love within the context of the enslaved experience. They also show how the search for belonging is wrapped up in complex notions of motherhood, as most recently showcased in Japanese auteur Naomi Kawase’s latest adoption drama, *True Mothers* (2020). Professor Wegenstein will also talk about her latest film *The Conductor* (2020), which revolves around the US-American conductor Marin Alsop.



Rafiki by Wanuri Kahiu



Princesita by Marialy Rivas



True Mothers by Naomi Kawase

This talk is followed by a roundtable discussion in which Bernadette Wegenstein will be in conversation with Dr. des. Susana Rocha Teixeira (Bielefeld University / SFB 1288), Prof. Dr. Helga Lutz (Bielefeld University / SFB 1288) and Annemarie Meier (ITESO, Universidad Jesuita de Guadalajara, Mexico), in order to reflect on the importance of practices of comparing for radical equality and a global feminist filmmaking practice. The event ends with a discussion based on audience questions. Language will be primarily English.



www.uni-bielefeld.de/sfb1288

SFB 1288
PRACTICES OF
COMPARING

CAMS



**UNIVERSITÄT
BIELEFELD**